



Polystyrene Moulding Machine

Ningbo PinSheng Machinery Manufacturer as one of the leading EPS Machine manufacturers in China, we have two factory in China and we produce all series of EPS Pre-expander Machine, Pinsheng® Polystyrene Moulding Machine, EPS Cutting Machine, EPS mould, EPP Machine, ETPU Machine. Please don't hesitate to email us or call us if you are interested in any of them!

Product Description

To create much more benefit for consumers is our company philosophy; customer growing is our working chase for Pinsheng® High quality low price Polystyrene Moulding Machine, Welcoming interested companies to cooperate with us, we look forward to having the opportunity of working with companies around the world for joint growth and mutual success.

High quality low price Polystyrene Moulding Machine, With good quality, reasonable price and sincere service, we enjoy a good reputation. Products are exported to South America, Australia, Southeast Asia and so on. Warmly welcome customers at home and abroad to cooperate with us for the brilliant future.

Our Pinsheng® Polystyrene Moulding Machine has overall basic function as all of the normal equipments, however, with accuracy design, our machine could not only save steam, but also improve the foam beads quality.

Model: PSSM1412

Brand: PinSheng

Product Parameter (Specification)

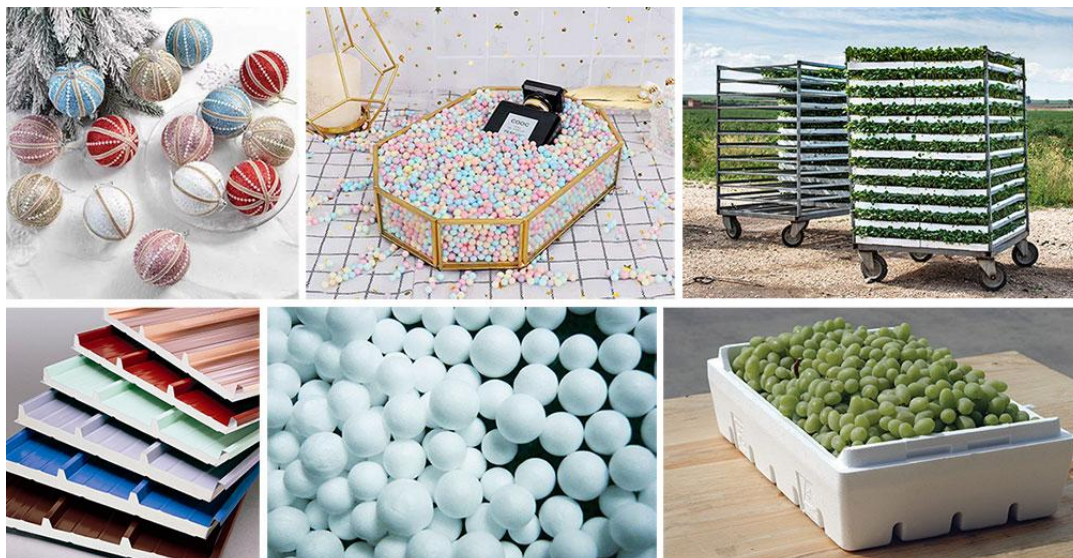
1. Mechanical structure	Our Polystyrene Moulding Machine adopts good quality steel plate, all the formwork is tempered at high temperature and shot peening at high pressure. It has high strength and high surface hardness. All templates are processed by CNC to ensure accuracy
2. Steam System	Our Polystyrene Moulding Machine provides long range control system reducing valve for stabilizing flow, with control accuracy ± 0.2 Bar.
3. Electrical control	Our Polystyrene Moulding Machine adopts all worldwide well-known components, such as Taita touch screen, Low-voltage electrical appliances are with the brand Schneider. Through steam pressure, main steam pressure, demoulding, air cooling, and

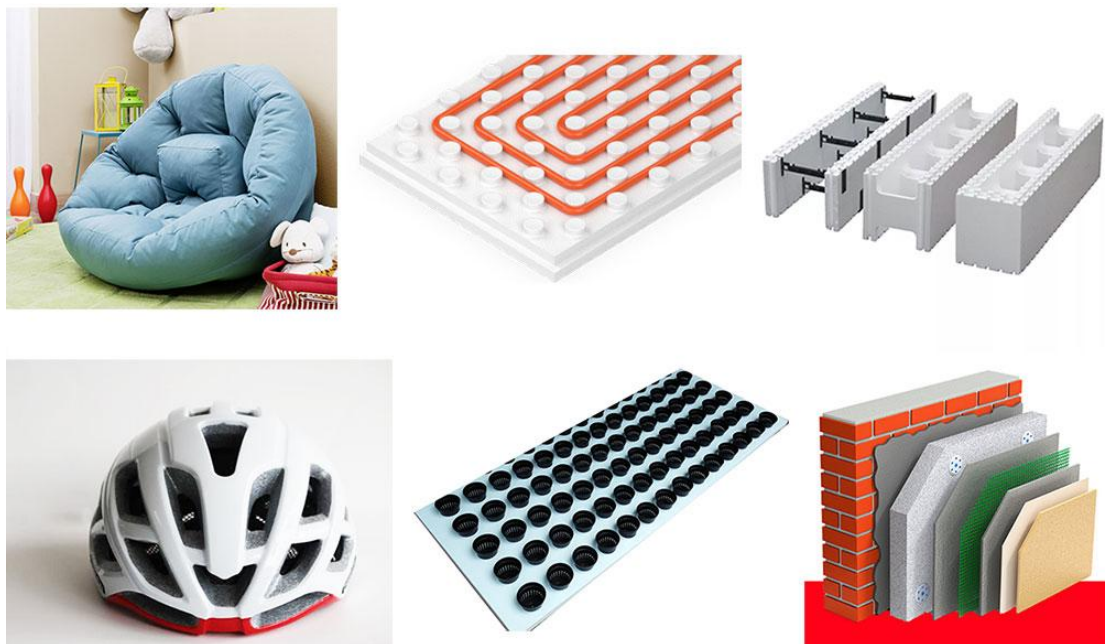
	pressurized feeding all adopt remote pressure regulating system, valves open and close according to the set pressure ratio, it is very easy to operate.
4. Hydraulic System	A digital encoder of the Polystyrene Moulding Machine is used to control the stroke distance of mold opening and clamping, it can keep the safety protection function of the mechanical, hydraulic and electrical tripe interlocking so as to meet the safety standard.



Product Feature And Application

Polystyrene Moulding Machine is widely used in our daily life, because it is light and economical advantage, it is applicable to produce vegetable boxes, fruitful boxes, fishing boxes, house hold appliance packaging, etc.





Deliver, Shipping And Serving



FAQ

1. Where is your factory located?

We have 2 production plant, one plant locates in Hangzhou which professionally producing EPS/EPP/ETPU machine. Another factory locates in Jiangsu Provide which producing EPS/EPP/ETPU mould. Both two factories are pretty close to the Shanghai port for easiest transportation.

2. Do you have detailed and professional installation manual?

We will provide very detailed installation manuals and videos, and the service until you are satisfied

3.Are you a trading company or a manufacturer?

We are manufacturer.

4.Q:How long is your delivery time of Polystyrene Moulding Machine?

Normally delivery time is 30~45 days.

5.Q:How many years have your company made this kind of equipment?

More than 10 years.

6.Q:Can I only buy some spare parts of Polystyrene Moulding Machine from you?

Yes, we also provide all kinds of spare parts that relatives to our machine.

7.How do you pack the equipment?

We will strengthen and protect the equipment to ensure that they will not be damaged during transportation.

8.Q:Can you send your staff to install the equipment for us?

Under normal conditions, it is possible. Now it is an epidemic situation. We will try our best to assist in case we cannot send technician in time. We will also conduct video connections with guests to teach them to install them in place.

9.Q:Can you can design the equipment according to our size?

Yes, it is acceptable

10.Q:How many production lines in your factory?

We have total 10 production line.